

90 degree union elbow

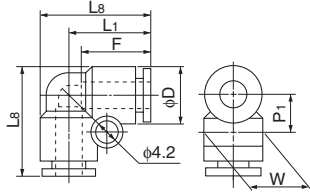
●Millimeter size type



Product number	Applicable tube outer diameter (mm)	L ₁ (mm)	L ₈ (mm)	P ₁ (mm)	F Tube insertion length (mm)	D (mm)	W (mm)	Min. inner diameter (mm)	Effective cross-sectional area (mm ²)	Weight (g)
EUL4	4	17.2	22.1	6.9	13	9.8	9.7	3.0	3.5	4.0
EUL6	6	18.5	24.8	8.3	15	12.6	12.5	5.0	9.5	6.0
EUL8	8	20.7	28.0	9.3	16	14.6	14.5	7.0	19.5	9.0
EUL10	10	24.7	33.4	10.8	19	17.5	17.5	9.0	32.5	15.0
EUL12	12	26.3	36.3	12.1	20	20.0	20.0	11.0	45.5	20.0

Product number	Applicable tube outer diameter (mm)	L ₁ (mm)	L ₈ (mm)	L ₁₂ (mm)	P ₁ (mm)	F Tube insertion length (mm)	D (mm)	W (mm)	Min. inner diameter (mm)	Effective cross-sectional area (mm ²)	Weight (g)
EUL16	16	34.9	48.7	50.8	12.9	27	28.0	28.0	13.0	97.5	50.0
EULL16	16	34.9	48.7	61.5	12.9	27	28.0	27.5	13.0	96.5	56.0

*EUL16 and EULL16 have a different screw hole position.
 *EULL16 is made to order.

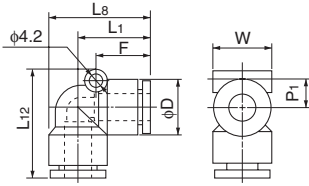


●Inch size type

Product number	Applicable tube outer diameter (inch)	L ₁ (mm)	L ₈ (mm)	P ₁ (mm)	F Tube insertion length (mm)	D (mm)	W (mm)	Min. inner diameter (mm)	Effective cross-sectional area (mm ²)	Weight (g)
EUL1/4	1/4	18.1	24.4	8.3	15	13.0	12.5	5.0	12.0	6.0
EUL5/16	5/16	20.6	27.9	9.3	16	15.0	14.5	7.0	20.0	9.0
EUL3/8	3/8	24.4	33.2	10.8	19	18.0	17.5	9.0	27.0	15.0
EUL1/2	1/2	27.5	38.0	12.6	21	21.5	21.0	11.0	54.5	20.0

☞ The inch size type is not plated.

EUL16, EULL16



90 degree branch elbow

●Millimeter size type



Product number	Applicable tube outer diameter (mm)	L ₁ (mm)	L ₂ (mm)	L ₃ (mm)	L ₄ (mm)	L ₁₁ (mm)	F Tube insertion length (mm)	P ₃ (mm)	P ₄ (mm)	W (mm)	D (mm)	d ₂ (mm)	Min. inner diameter (mm)	Effective cross-sectional area (mm ²)	Weight (g)
EULY6	6	25.6	18.0	31.9	24.3	24.8	15	14.8	12.2	12.6	12.6	4.2	5.0	—	10.0
EULY8	8	28.2	19.6	35.5	26.9	28.8	16	16.4	14.2	14.6	14.6	4.2	7.0	—	14.0
EULY10	10	31.3	22.6	40.0	31.3	35.0	19	18.4	17.5	17.5	17.5	4.2	9.0	—	23.0

