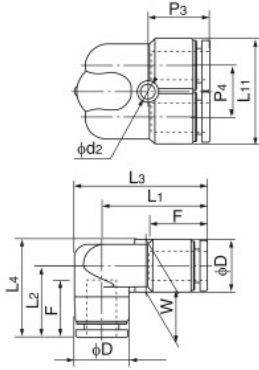


## 90 degree branch union elbow

●Millimeter size type



Product number	Applicable tubing outer diameter (mm)	L1 (mm)	L2 (mm)	L3 (mm)	L4 (mm)	L11 (mm)	F Tubing insertion length (mm)	P3 (mm)	P4 (mm)	W (mm)	D (mm)	d2 (mm)	Min. inner diameter (mm)	Effective sectional area (mm <sup>2</sup> )	Weight (g)
AULY6	6	25.6	18.0	31.9	24.3	24.8	15	14.8	12.2	12.6	12.6	4.2	5.0	—	10.0
AULY8	8	28.2	19.6	35.5	26.9	28.8	16	16.4	14.2	14.6	14.6	4.2	7.0	—	14.0
AULY10	10	31.3	22.6	40.0	31.3	35.0	19	18.4	17.5	17.5	17.5	4.2	9.0	—	23.0

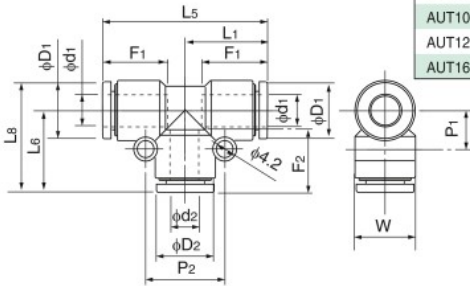


## Union tee

●Millimeter size type



Product number	d1 Applicable tubing outer diameter (mm)	d2 Applicable tubing outer diameter (mm)	L1 (mm)	L5 (mm)	L6 (mm)	L8 (mm)	F1 Tubing insertion length (mm)	F2 Tubing insertion length (mm)	P1 (mm)	P2 (mm)	D1 (mm)	D2 (mm)	W (mm)	Min. inner diameter (mm)	Effective sectional area (mm <sup>2</sup> )	Weight (g)
AUT4	4	4	17.2	34.4	17.2	22.1	13	13	6.9	14.0	9.8	9.8	9.7	3.0	3.5	6.0
AUT4-6	4	6	17.7	35.4	18.0	22.9	13	15	6.8	17.0	9.8	12.6	12.5	3.0	2.5	8.0
AUT6	6	6	18.5	37.0	18.5	24.8	15	15	8.3	17.0	12.6	12.6	12.5	5.0	4.5	9.0
AUT6-8	6	8	19.5	39.0	20.4	26.7	15	16	8.2	19.0	12.6	14.6	14.5	5.0	15.5	11.0
AUT8	8	8	20.7	41.4	20.7	28.0	16	16	9.3	19.0	14.6	14.6	14.5	7.0	19.5	13.0
AUT8-10	8	10	21.7	43.4	24.4	31.7	16	19	9.2	22.0	14.6	17.5	17.5	7.0	21.0	18.0
AUT10	10	10	24.7	49.3	24.7	33.4	19	19	10.8	22.0	17.5	17.5	17.5	9.0	32.5	22.0
AUT10-12	10	12	25.6	51.1	26.3	35.1	19	20	10.8	24.0	17.5	20.0	20.0	9.0	27.0	26.0
AUT12	12	12	26.3	52.6	26.3	36.3	20	20	12.1	24.0	20.0	20.0	20.0	11.0	45.5	29.0
AUT16	16	16	34.9	69.8	34.9	48.9	27	27	15.9	31.7	28.0	28.0	27.5	13.0	97.0	73.0

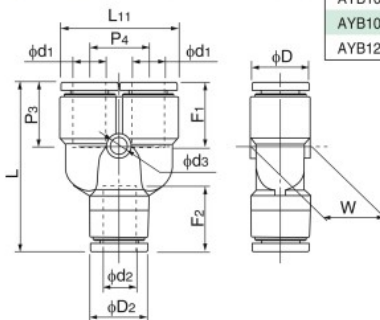


## Y union

●Millimeter size type



Product number	d1 Applicable tubing outer diameter (mm)	d2 Applicable tubing outer diameter (mm)	L (mm)	L11 (mm)	F1 Tubing insertion length (mm)	F2 Tubing insertion length (mm)	P3 (mm)	P4 (mm)	W (mm)	D1 (mm)	D2 (mm)	d3 (mm)	Min. inner diameter (mm)	Effective sectional area (mm <sup>2</sup> )	Weight (g)
AYB4-4	4	4	33.8	20.8	13	13	13.4	11.0	9.8	9.8	9.8	3.2	3.0	3.0	6.0
AYB4-6	4	6	34.2	20.8	13	15	13.4	11.0	12.5	9.8	12.6	3.2	3.0	2.5	8.0
AYB6-6	6	6	37.5	24.8	15	15	14.8	12.2	12.5	12.6	12.6	4.2	5.0	8.0	10.0
AYB6-8	6	8	39.2	24.8	15	16	14.8	12.2	14.5	12.6	14.6	4.2	5.0	17.0	12.0
AYB8-8	8	8	42.9	28.8	16	16	16.4	14.2	14.6	14.6	14.6	4.2	7.0	18.0	14.0
AYB8-10	8	10	44.8	28.8	16	19	16.4	14.2	17.5	14.6	17.5	4.2	7.0	22.5	19.0
AYB10-10	10	10	48.3	35.0	19	19	18.4	17.5	17.5	17.5	17.5	4.2	9.0	27.0	24.0
AYB10-12	10	12	49.4	35.0	19	20	18.4	17.5	20.0	17.5	20.0	4.2	9.0	30.0	29.0
AYB12-12	12	12	54.0	40.0	20	20	20.3	20.0	20.0	20.0	20.0	4.2	11.0	38.5	33.0



Tubing

Clean tubing

Processed tubing

PushOne fitting

QuickSeal fitting

Clean fitting/ Chemifit

Bamboo-shoot fitting

Control switch/ Detachable series

Jig/Tool/ Accessory

Technical information

Reference