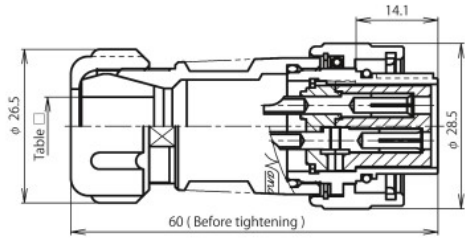


# NEW Series Shell Size 20

[ Power supply side ] < Socket ( female ) contact used >

S Type

[ Power receiving side ] < Pin ( male ) contact used >

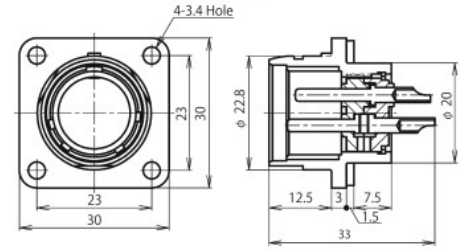


NEW-20 ■ -PF □

Plug

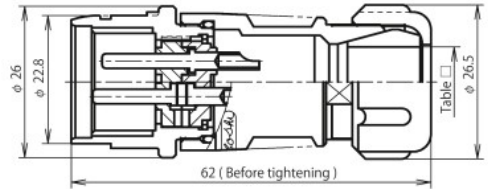


Receptacle

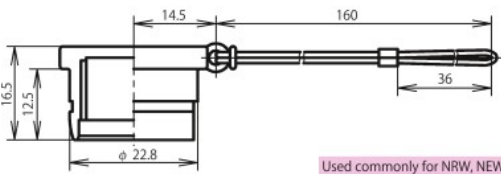


NEW-20 ■ -RM

Adapter



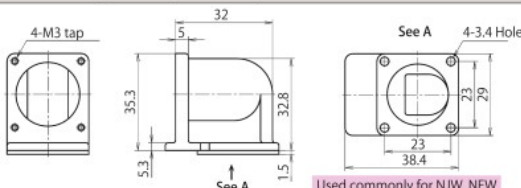
NEW-20 ■ -AdM □



Used commonly for NRW, NEW

Plug waterproof cap : NRW-20-PCa • 1

Accessory



NJW-20-L za

For the plug and adapter, be sure to select □ ( cable packing symbol ).

## Table □

In order to secure the intended waterproof function, a cable to be used for the plug/adapter should have an appropriate specification and structure.

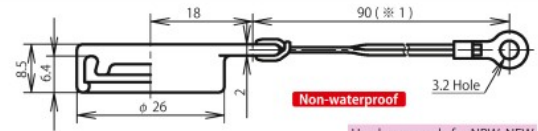
Shell size	Symbol □	Outer diameter of cable used
20	8	φ 7.0 to φ 8.5
	10	φ 8.6 to φ 10.5
	12	φ 10.6 to φ 12.5

■ indicates the number of contacts.

Shell size	Number of Contacts	3
20	Contact arrangement <When viewed from the pin (male) contact coupling side>	
	Safety standard (Note-1)	UL · CSA , TÜV
	Rating	250V 15A
	Withstand voltage ( V r.m.s. )	1,500
	Wire size AWG	#14

The cable to use should have a conductor cross sectional area shown in the left-side table.

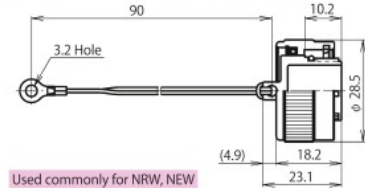
Note-1 : All connectors are UL · CSA , TÜV certified. Not necessary to specify a standard by a product name. For safety standards, see pp.128 and 130.



Used commonly for NRW, NEW

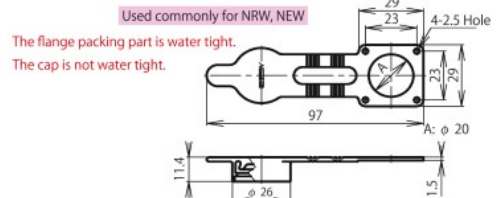
( ※ 1 ) Length 35 mm also available. ( Example : NRW-20-RCa L35 )

Receptacle rubber cap : NRW-20-RCa

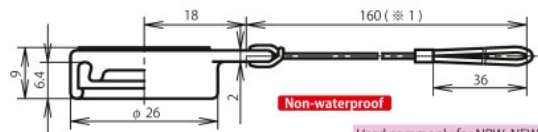


Used commonly for NRW, NEW

Receptacle waterproof cap : NRW-20-RCa • 1



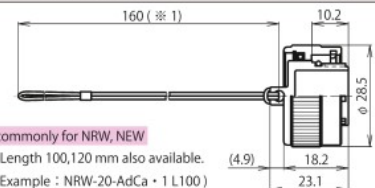
Receptacle rubber cap : NRW-20-RCa • 2



Used commonly for NRW, NEW

( ※ 1 ) Length 100,120 mm also available. ( Example : NRW-20-AdCa L100 )

Adapter rubber cap : NRW-20-AdCa



Used commonly for NRW, NEW

( ※ 1 ) Length 100,120 mm also available. ( Example : NRW-20-AdCa • 1 L100 )

Adapter waterproof cap : NRW-20-AdCa • 1

NEW

20

Accessory