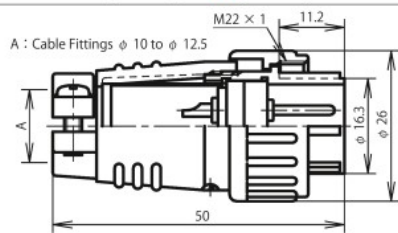
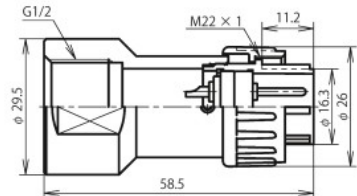


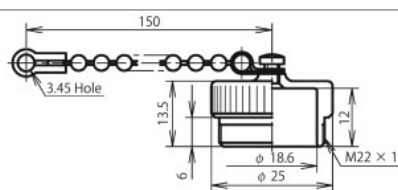
【 Power receiving side 】 < Pin (male) contact used >



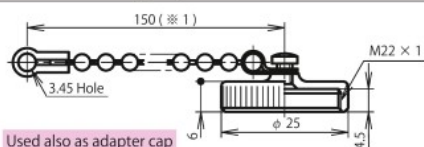
NJC-20 ■ -PM



NJC-20 ■ -GPM1/2 (Note)



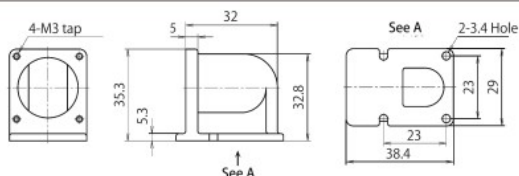
Plug cap : NJC-20-PCa



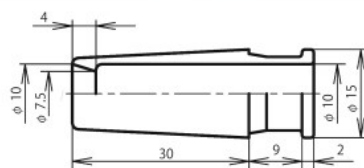
Used also as adapter cap

(※ 1) Length 70 mm also available. (Example : NJC-20-RCa L70)

Receptacle cap : NJC-20-RCa



NJC-20-L za



Cable bushing : NJC-20-CB

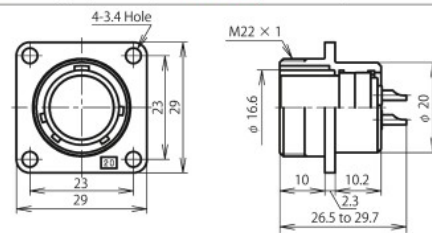
G Type

Plug

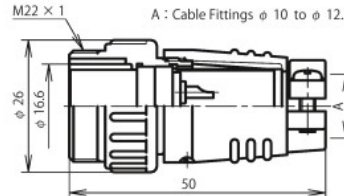
Accessory



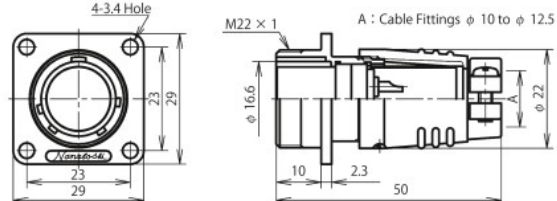
【 Power supply side 】 < Socket (female) contact used >



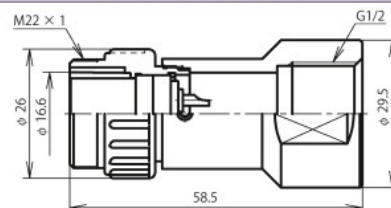
NJC-20 ■ -RF



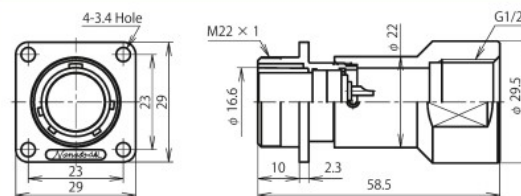
NJC-20 ■ -AdF



NJC-20 ■ -Ad(F)F

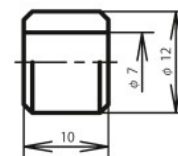


NJC-20 ■ -GAdF1/2 (Note)



NJC-20 ■ -GAd(F)F1/2 (Note)

Accessory



Cable bushing : CBAS-12-7

■ indicates the number of contacts.
The conductor cross sectional area is less than the following value. However, for safety standard certified products, use a cable having a value shown on pp.127 and 130.

Shell size	Number of Contacts	2	3	4	5	7	10	12	14
20	Contact arrangement <When viewed from the pin (male) contact coupling side>								
	Safety standard (Note-1)	UL-CSA TÜV	UL-CSA TÜV	UL-CSA TÜV	UL-CSA				—
	Rating (Allowable current for signals)	250V				5A			
	Withstand voltage (V r.m.s.)	1,500				1,000			
	Wire size (mm ²)	2				0.5			
	Remarks	—				For signals			

Note-1 : Specified separately. Selection of either "specified as a set of UL and CSA" or "TÜV specified." For safety standards, see pp.127 and 130.

JIS mark refers to JIS C 5432 compliant products.
[] : Gold plating contact