

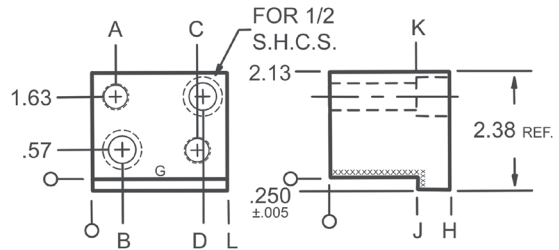
Medium Duty KM Series Self-Lubricating Keeper Blocks – Inch



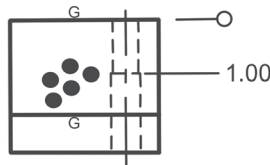
8KM24G

Product Features

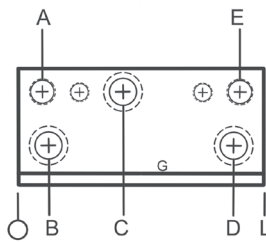
These medium duty Keeper blocks are manufactured from hardened steel with oil-impregnated graphite plugs covering 20-30% of the wear surface. The Keepers are supplied with mounting holes for 1/2" S.H.C.S. All blocks are marked with the part number for ease of identification.



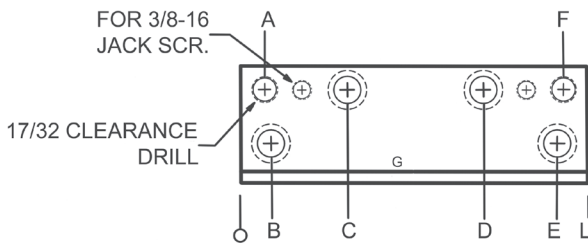
FOR 3.0" LENGTHS



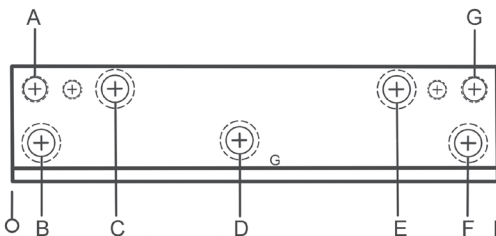
FOR 4.0" TO 6.0" LENGTHS



FOR 8.0" LENGTHS



FOR 10.0" LENGTHS



Part Number	Length L (in)	H (in)	J (in)	K (in)
8KM24G	3.00	1.62	1.000	1.00
8KM32G	4.00			
8KM40G	5.00			
8KM48G	6.00			
8KM64G	8.00			
8KM80G	10.00	1.88	1.250	1.25
10KM24G	3.00			
10KM32G	4.00			
10KM40G	5.00			
10KM48G	6.00			
10KM64G	8.00	2.12	1.500	1.50
10KM80G	10.00			
12KM24G	3.00			
12KM32G	4.00			
12KM40G	5.00			
12KM48G	6.00	2.44	1.750	1.25
12KM64G	8.00			
12KM80G	10.00			
14KM24G	3.00			
14KM32G	4.00			
14KM40G	5.00	2.44	1.750	1.25
14KM48G	6.00			
14KM64G	8.00			
14KM80G	10.00			