

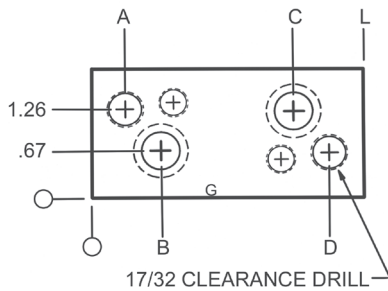
Medium Duty Self-Lubricating Guide Blocks – Inch



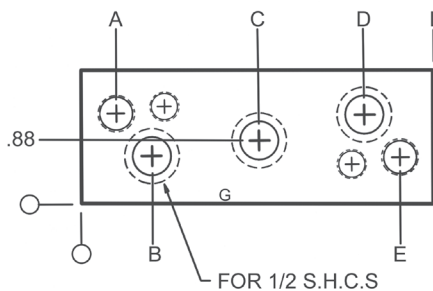
Product Features

These medium duty guide blocks are manufactured from hardened steel with oil-impregnated graphite plugs covering 20-30% of the wear surface. The blocks are supplied with mounting holes for 1/2" S.H.C.S. All blocks are marked with the part number for ease of identification.

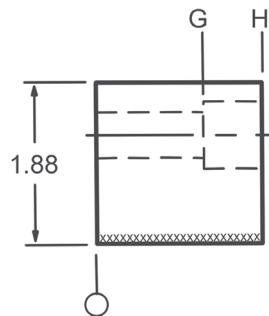
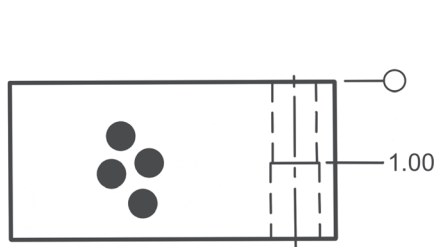
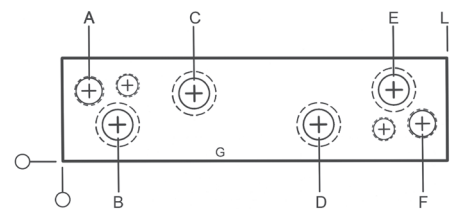
FOR 3.0" & 4.0" LENGTHS



FOR 5.0" & 6.0" LENGTHS



FOR 8.0" TO 10.0" LENGTHS



MATERIALS:

- ◆ High quality carburized steel with oil-impregnated graphite plugs. They are precision ground and hardened to Rc56-62.

MOUNTING SCREWS:

- ◆ 1/2" S.H.C.S. recommended for mounting