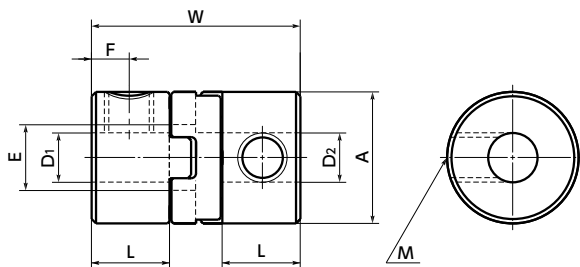


MOS



Outside diameter $\phi 8$

Dimensions

Unit : mm

Part Number	A	L	W	E	F	G	M	Screw Tightening Torque (N·m)
MOS-8	8	4.8	12.7	4	2.3		M3	0.7
MOS-12C	12	5	14.9	6	2.5	4	M2	0.5
MOS-16C	16	7	21	8	3.5	5	M2.5	1
MOS-20C	20	7	22.1	10	3.5	6.5	M2.5	1
MOS-25C	25	8	27.2	14	4	9	M3	1.5
MOS-32C	32	10	33.3	18	5	11	M4	2.5

Part Number	Standard Bore Diameter D1 · D2													
	1	2	2.5	3	4	5	6	6.35	7	8	10	11	12	14
MOS-8	●	●	●	●										
MOS-12C				●	●	●								
MOS-16C				●	●	●	●							
MOS-20C						●	●	●	●	●				
MOS-25C								●	●	●	●	●	●	●
MOS-32C								●		●	●	●	●	●

- All products are provided with hex socket set screw (**MOS-8**) or hex socket head cap screw (**MOS-C**)
- The dimensional allowance for bore diameter of **MOS-8** is H8.
- Recommended dimensional allowances of applicable shaft diameter are h6 and h7.
- In case of mounting on D-cut shaft, be careful about the position of the D-cut surface of the shaft. → P.257

Additional Keyway at Shaft Hole → P.788

Cleanroom Wash & Packaging → P.792

Change to Stainless Steel Screw → P.790

Available / Add'l charge

Available / Add'l charge

Available / Add'l charge