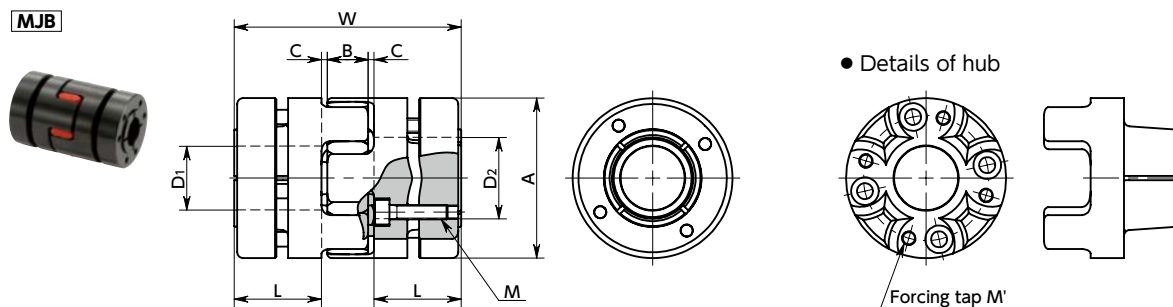


MJB Flexible Coupling - Jaw - type (Bushing)

WEB Selection Tool
 WEB CAD Download
 High torque
 Vibration absorption
 Electrical Insulation

MJB



Dimensions

Unit : mm

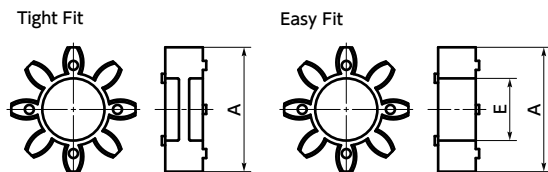
Part Number	A	L	W	B	C*1	Sleeve E	M	Number of bolts	Forcing tap M'	Screw Tightening Torque (N·m)
MJB-40	40	25	66	12	2	18	M4	6	M4	4
MJB-55	55	30	78	14	2	27.5	M5	4	M5	8.5
MJB-65	65	35	90	15	2.5	31	M5	8	M5	8.5
MJB-80	80	45	114	18	3	37	M6	8	M6	14
MJB-95	95	50	126	20	3	45.5	M8	8	M8	35

*1 Use with C Dimension

Part Number	Standard Bore Diameter																									
	D1 · D2	8	9.525	10	11	12	14	15	16	18	19	20	22	24	25	28	30	32	35	38	40	42	45	48	50	
MJB-40	●	●	●	●	●	●	●	●	●	●	●	●														
MJB-55			●	●	●	●	●	●	●	●	●	●	●	●	●	●										
MJB-65						●	●	●	●	●	●	●	●	●	●	●	●	●	●	●	●					
MJB-80												●	●	●	●	●	●	●	●	●	●	●	●			
MJB-95															●	●	●	●	●	●	●	●	●	●	●	●

- All products are provided with hex socket head cap screw.
- Recommended dimensional allowances of applicable shaft diameter are h6 and h7.

● Sleeve Details



Additional Keyway at Shaft Hole → P.788
 Cleanroom Wash & Packaging → P.792
 Change to Stainless Steel Screw → P.790

Please feel free to contact us

Not Available

Not Available