

XBW-C/XBWS-C Flexible Coupling - Disk Type

WEB Selection Tool

WEB CAD Download

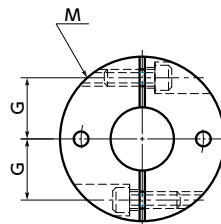
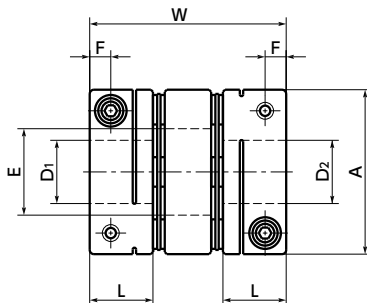
Zero Backlash

High Rigidity

SUS

Stainless steel

XBW-C Aluminum alloy hub

XBWS-C Made of all stainless steel


Dimensions

Unit : mm

Part Number	A	L	W	E	F	G	M	Screw Tightening Torque (N·m)
XBW-15C2	15	7.5	22	6.1	2.3	5.25	M2	0.5
XBW-19C2	19	9	25.5	8.5	2.5	7.1	M2	0.5
XBW-25C2	25	11	32.2	12.5	3.5	9.25	M2.5	1
XBW-27C2	27	11	32.2	14.5	3.5	10.25	M2.5	1
XBW-34C3	34	12	37.4	16.5	4	13	M3	1.5
XBW-39C2	39	15	46.6	20.5	5	14.5	M4	3.5
XBW-44C2	44	15	46.6	23	5	17	M4	3.5
XBW-56C3	56	20	60.4	29	6	21.25	M5	8
XBW-68C5	68	24	75	33	7	25	M6	13
XBW-82C5	82	31	98	36	9	29.5	M8	30
XBW-94C7	94	31	99.6	48	9	35.5	M8	30
XBW-104C8	104	32	104.4	58	9	40.5	M8	30
XBWS-15C2	15	7.5	22	6.1	2.3	5.25	M2	0.5
XBWS-19C2	19	9	25.5	8.5	2.5	7.1	M2	0.5
XBWS-25C2	25	11	32.2	12.5	3.5	9.25	M2.5	1
XBWS-27C2	27	11	32.2	14.5	3.5	10.25	M2.5	1
XBWS-34C3	34	12	37.4	16.5	4	13	M3	1.5
XBWS-39C2	39	15	46.6	20.5	5	14.5	M4	3.5
XBWS-44C2	44	15	46.6	23	5	17	M4	3.5
XBWS-56C3	56	20	60.4	29	6	21.25	M5	8

size	Standard Bore Diameter																									
	D1 · D2																									
	3	4	5	6	8	10	11	12	14	15	16	18	19	20	22	24	25	28	30	32	35	38	40	42	45	50
15C2	●	●	●	●																						
19C2		●	●	●	●																					
25C2			●	●	●	●	●	●																		
27C2				●	●	●	●	●	●																	
34C3				●	●	●	●	●	●	●	●															
39C2					●	●	●	●	●	●	●	●	●	●												
44C2					●	●	●	●	●	●	●	●	●	●	●	●										
56C3						●	●	●	●	●	●	●	●	●	●	●	●	●								
68C5*1									●	●	●	●	●	●	●	●	●	●	●	●	●	●	●	●	●	●
82C5*1												●	●	●	●	●	●	●	●	●	●	●	●	●	●	●
94C7*1																	●	●	●	●	●	●	●	●	●	●
104C8*1																					●	●	●	●	●	●

- All products are provided with hex socket head cap screw.

- Recommended dimensional allowances of applicable shaft diameter are h6 and h7.

- In case of mounting on D-cut shaft, be careful about the position of the D-cut surface of the shaft. → P.257

- *1 This size is only for **XBW-C**

Additional Keyway at Shaft Hole → P.788

Cleanroom Wash & Packaging → P.792

Change to Stainless Steel Screw → P.790

Available / Add'l charge

Available / Add'l charge

Available / Add'l charge