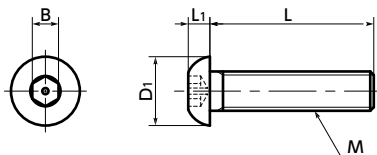




# SRHS Socket Button Head Cap Screws with Pin

WEB Selection Tool | WEB CAD Download | Tamper Resistance | SUS Stainless steel



## Part number specification

### SRHS-M5-16



Order in number of packs.  
The minimum order quantity is 1 piece. → P.794

- Button head cap screws with pin at the center of their socket.
- They cannot be installed or removed by using standard tools.
- Install and remove by using **SRH** Specialty Key.
- Application

Machinery, tools, equipment, and devices disassembly prevention - tampering prevention, theft prevention for outdoor facilities, security measures, and safety measures

## Material/Finish



|                | SRHS                |
|----------------|---------------------|
| Main Body      | SUS304              |
| Strength Class | Equivalent to A2-50 |

Unit : mm

| Part Number    | M  | L |   |    |    |    |    | D1  | L1   | B   | Applicable wrench | Mass (g)    |
|----------------|----|---|---|----|----|----|----|-----|------|-----|-------------------|-------------|
| <b>SRHS-M3</b> | M3 | 6 | 8 | 10 | 12 | 16 |    | 5.7 | 1.65 | 2   | SRH-2             | 0.48 - 0.93 |
| <b>SRHS-M4</b> | M4 | 6 | 8 | 10 | 12 | 16 | 20 | 7.6 | 2.2  | 2.5 | SRH-2.5           | 1.1 - 2.2   |
| <b>SRHS-M5</b> | M5 |   |   | 10 | 12 | 16 | 20 | 9.5 | 2.75 | 3   | SRH-3             | 2 - 3.3     |
| <b>SRHS-M6</b> | M6 |   |   | 10 | 12 | 16 | 20 | 25  | 10.5 | 3.3 | SRH-4             | 3.3 - 6.1   |

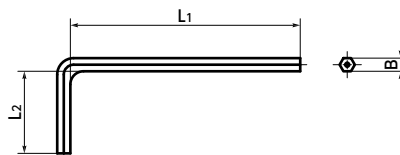
| Part Number    | Qty*1 per pack |
|----------------|----------------|
| <b>SRHS-M3</b> | 20             |
| <b>SRHS-M4</b> | 20             |
| <b>SRHS-M5</b> | 20             |
| <b>SRHS-M6</b> | 10             |

\*1 The minimum order quantity is 1 piece. → P.794

## ● Dedicated wrench

Unit : mm

| Part Number    | B   | L1 | L2 | Mass (g) | Qty per pack |
|----------------|-----|----|----|----------|--------------|
| <b>SRH-2</b>   | 2   | 50 | 16 | 1.8      | 1            |
| <b>SRH-2.5</b> | 2.5 | 56 | 18 | 3.1      | 1            |
| <b>SRH-3</b>   | 3   | 63 | 20 | 5        | 1            |
| <b>SRH-4</b>   | 4   | 70 | 25 | 10       | 1            |



1 Individual Sales → P.794 | Cleanroom Wash & Packaging → P.792 | Screw Length Adjustment → P.796 | Vibration Resistant → P.795 | Modification process for captive use → P.791

Available / Add'l charge | Available / Add'l charge | Available / Add'l charge | Available / Add'l charge | Available / Add'l charge