

Optional Idlers and Brackets

COUPLINGS

ETP BUSHINGS

ELECTROMAGNETIC
CLUTCHES & BRAKES

SPEED CHANGERS
& REDUCERS

INVERTERS

LINEAR SHAFT DRIVES

TORQUE LIMITERS

ROSTA

SERIES

SUSPENSION UNITS

TENSIONERS

ANTI-VIBRATION
MOUNTINGS

OSCILLATING
MOUNTINGS

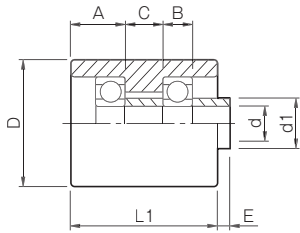
MODELS

SE

RSE

NSE

Pulley Idler RA Models



Model	Applied tensioner	A	B	C	D	d	d1	E	L1	Bearing	Unit [mm]
RA-11	RSE-11	13	7	9	30	8	12	3	35	608 ZZ	
RA-15/18	RSE-15/18	16	9	13	40	10	15	6	45	6200 ZZ	
RA-27	RSE-27	22	12	16	60	12	18	6	60	6301 ZZ	
RA-38	RSE-38	39	15	22	80	20	28	8	90	6304 ZZ	
RA-45	RSE-45	48	15	60	90	20	28	10	135	6304 ZZ	

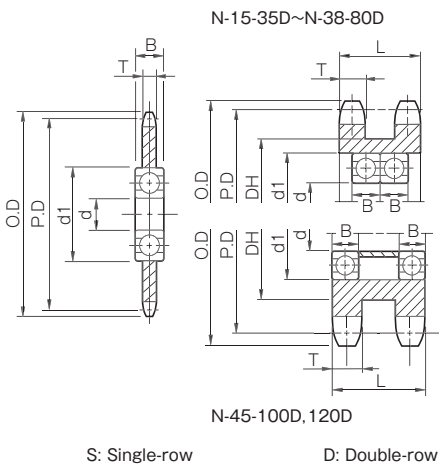
* Bolt and nut for locking the pulley idler are included.
* Materials: Aluminum alloy

How to Place an Order

RA - 11
Size

* Depending on your location and such, we may not be able to sell you our products. Please contact us for details.

Sprocket Idler N Models



Model	Applied tensioner	O.D.	P.D.	B	DH	d	d1	L	T	Number of teeth	Bearing	Unit [mm]
N-15	-35S NSE-15-35S	66	60.89	9	—	10	30	—	4.4	20	6200 ZZ	
	14.4											
N-18	-40S NSE-18-40S	75	69.12	9	—	10	30	—	7.3	17	6200 ZZ	
	21.5											
N-27	-50S NSE-27-50S	89	81.37	12	—	12	37	—	8.9	16	6301 ZZ	
	26.8											
N-38	-60S NSE-27-60S	95	85.61	12	—	12	37	—	11.9	14	6301 ZZ	
	34.5											
N-45	-80S NSE-38-80S	108	98.14	15	—	20	52	—	15.0	12	6304 ZZ	
	43.9											
N-45	-100S NSE-45-100S	127	112.70	15	—	20	52	—	18.0	11	6304 ZZ	
	53.4											
N-45	-120S NSE-45-120S	140	123.30	15	—	20	52	—	24.0	10	6304 ZZ	
	68.9											

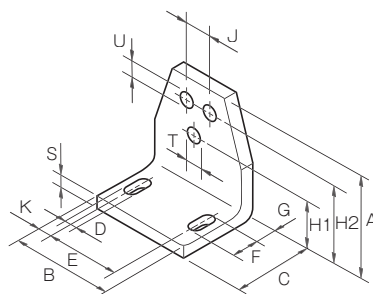
* Bolt and nut for locking the sprocket idler are included.
* Symbol S at the end of size applies for single row of sprocket and D for double rows of sprocket.

How to Place an Order

N - 15 - 35S
Size Nominal sprocket diameter

* Depending on your location and such, we may not be able to sell you our products. Please contact us for details.

Bracket WS/WD Models



Model	Applied tensioner	A	B	C	D	E	F	G	H1	H2	J	K	S	T	U	Unit [mm]
WS-11/ WD-15	SE,RSE-11	46	45	30	7	30	13	11.5	27	35	10	7.5	4	6.5	5.5	
WS-15/ WD-18	SE,RSE,NSE-15	58	55	32	7	40	13	13.5	34	44	12	7.5	5	8.5	6.5	
WS-18/ WD-27	SE,RSE,NSE-18	74	70	38	9.5	50	15.5	16.5	43	55	20	10	6	10.5	8.5	
WS-27/ WD-38	SE,RSE,NSE-27	98	90	52	11.5	65	21.5	21	57	75	25	12.5	8	12.5	10.5	
WS-38/ WD-45	SE,RSE,NSE-38	116	110	55	14	80	24	21	66	85	35	15	8	16.5	12.5	
WS-45/ WD-50	SE,RSE,NSE-45	140	140	66	18	100	30	26	80	110	40	20	10	20.5	12.5	

How to Place an Order

WS - 11/WD - 15
Size Size

* Depending on your location and such, we may not be able to sell you our products. Please contact us for details.