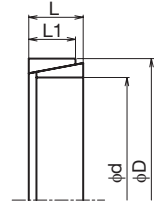
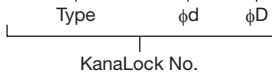


Cost-Performance Product

KanaLocks

KPL300-type

● Order No. Example
KPL300 20x25



As the KPL300-type is completely set up in a mounting space which is extremely small in the radial direction, it is possible to select up to 4 built-in KanaLocks. This also allows a large torque to be transmitted. Boss hole and shaft fit is up to H8/h8.

 Special Structural Steel

Type	φd	φD	L	L1	Maximum Allowable Torque N·m	Weight g	¥
KPL 300	10	13	4.5	3.7	6.9	1.9	
	12	15			10	2.2	
	13	16			11	2.3	
	14	18	6.3	5.3	20	4.9	
	15	19			23	5.3	
	16	20			26	5.5	
	17	21			29	6.0	
	18	22			33	6.2	
	19	24			36	8.0	
	20	25			40	8.2	
	22	26			49	7.3	
	24	28	58	8.0			
	25	30	6.3	5.3	63	10.0	
	28	32			80	9.2	
	30	35			91	12	
	32	36			104	10	
	35	40	7	6	142	17	
	36	42			150	20	
	38	44			167	21	
	40	45	8	6.6	198	23	
	42	48			219	28	
	45	52	10	8.6	333	42	
	48	55			380	45	
	50	57			412	46	
	55	62			499	50	
	56	64			632	67	
	60	68	12	10.4	725	70	
	63	71			800	75	
65	73	850			77		
70	79	14	12.2	1,140	102		
71	80			1,180	104		
75	84			1,310	110		
80	91	17	15	1,860	175		



KanaLock No. and quantity



Same-day shipping



* Please see our company's homepage and the selection material in the product information, for the transmitted torque and selection.
* Refer to P338 for dimensions not listed.

Semi-F Series
& FITLINK
Roller
Chains
Chain
Accessories
Idlers &
Tensioners
Sprockets
Oilless
Bushings
Transmission
Accessories
Conveyor Chains/
Sprockets
Chain
Couplings
Roller
Halls
Triple Speed/Center
[Transp] Chains
Timing Belts/
Pulleys/Flanges
Shaft Collars
Pinions/Racks/
Miter Gears
Imperfect
Products