

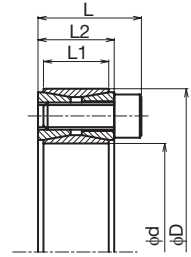
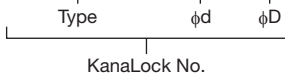
Cost-Performance Product

KanaLocks

KPL200-type

● Order No. Example

KPL200 20×47



The KPL200-type is a KanaLock for a shaft/boss fastening requiring a large transmitted torque.

Mounting is easy and other parts are not needed. The adaptable shaft diameters are from 19mm to 70mm, and boss hole and shaft fit is up to H9/h9. Drawn and polished steel can also be used for the shaft.

 Special Structural Steel

Type	φd	φD	L	L2	L1	Clamp Screw		Loosening Screw da	Maximum Allowable Torque N·m	Bolt Tightening Torque N/m	Weight kg	¥
						No. of Units	Size					
KPL 200	19	47	26	20	17	8	M 6×18	M 8	270	14	0.23	
	20								285		0.23	
	22								315		0.22	
	24	50				9			385		0.24	
	25								405		0.24	
	28	55				10			500	14	0.28	
	30								540		0.27	
	32								690		0.32	
	35								750		0.30	
	38	65				14			950		0.35	
	40								1,000		0.33	
	42								1,640		0.58	
	45	75	32	24	20	12	M 8×22	M10	1,750	34	0.55	
	48								1,870		0.62	
	50								1,950		0.59	
	55	85	90	32	24	20	14	M 8×22	M10	34	2,500	0.64
60	2,730	0.68										
65	3,380	0.73										
70	110	38	28	24	14	M10×25	M12	5,100	66	1.30		



KanaLock No. and quantity



Postage

Same-day shipping



Guide

* Please see our company's homepage and the selection material in the product information, for the transmitted torque and selection.
* See P331 for dimensions not listed.