

# HLA Series Thin Parallel Hand (Bush Type)

## Thin and Compact Parallel Hand

### Key Features

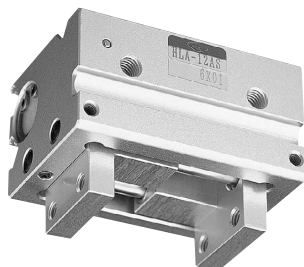
#### ■ Bush guide

Bush guide provides high impact resistance

#### ■ For use in both small and large workpiece handling

Low height compact design

Long motion stroke for multi-purpose use



HLA-12AS

Hand  
(2-law)

### How To Order

Standard ----- **HLA-12AS**

Option ----- **HLA - 12AS - E16S2** ----- HLA-12AS with 2 of E16 non-contact reed switches

Size	
Symbol	
12AS	
15AS	
20AS	

Sensor, Quantity			
Symbol	Name	Symbol	Name
E16	Non-Contact 3-Lead	E26L	Contact 2-Lead
E16L	Non-Contact 3-Lead	E27	Contact 2-Lead
E17	Non-Contact 2-Lead	E27L	Contact 2-Lead
E17L	Non-Contact 2-Lead	S1	1 Sensor
E26	Contact 2-Lead	S2	2 Sensors

For sensor detail ▶277P

### Specification

Model	HLA-12AS For Layout Drawing ▶129P	HLA-15AS For Layout Drawing ▶129P	HLA-20AS For Layout Drawing ▶130P
Working Pressure	Pneumatic: 0.3 to 0.7MPa		
Lubrication	Not Required or Turbine Oil Class 1 (ISOVG32)		
Ambient Temperature (°C)	5 to 60		
Total Jaw Stroke (mm)	15	20	25
Cylinder Diameter (mm)	dia.12	dia.15	dia.20
Internal Volume [Reciprocation] (cm <sup>3</sup> /time)	1.69	3.53	7.85
Repeatability (mm)	±0.03		
Weight (g)	152	276	504