



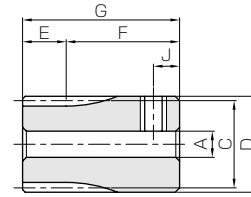
BSS Brass Spur Gears



Module 1



Specifications	
Precision grade	JIS grade N8 (JIS B1702-1: 1998) JIS grade 4 (JIS B1702: 1976)
Gear teeth	Standard full depth
Pressure angle	20°
Material	Free cutting brass (C3604)
Heat treatment	—
Tooth hardness	(more than 80HV)



S3T

Catalog No.	Module	No. of teeth	Shape	Bore	Hub dia.	Pitch dia.	Outside dia.	Face width	Hub width	Total length	Keyway
				A _{H7}	B	C	D	E	F	G	Width×Depth
BSS1-15A BSS1-15B	m1	15	S3T	4	17	15	17	6	15	21	—
S3T			5	17	15	17	6	15	21	—	
BSS1-16A BSS1-16B		16	S1T	4	12	16	18	6	8	14	—
S1T			5	12	16	18	6	8	14	—	
BSS1-17A		17	S1T	6	14	17	19	6	8	14	—
BSS1-18A BSS1-18B		18	S1T	5	15	18	20	6	8	14	—
S1T			6	15	18	20	6	8	14	—	
BSS1-19A		19	S1T	6	16	19	21	6	8	14	—
BSS1-20A BSS1-20B BSS1-20C		20	S1T	4	16	20	22	6	8	14	—
S1T			5	16	20	22	6	8	14	—	
S1T			6	16	20	22	6	8	14	—	
BSS1-21A		21	S1T	6	18	21	23	6	8	14	—
BSS1-22A		22	S1T	6	18	22	24	6	8	14	—
BSS1-23A		23	S1T	6	20	23	25	6	8	14	—
BSS1-24A BSS1-24B BSS1-24C		24	S1T	5	20	24	26	6	8	14	—
S1T			6	20	24	26	6	8	14	—	
S1T			8	20	24	26	6	8	14	—	
BSS1-25A BSS1-25B BSS1-25C		25	S1T	5	22	25	27	6	8	14	—
S1T			6	22	25	27	6	8	14	—	
S1T			8	22	25	27	6	8	14	—	
BSS1-26A BSS1-26B		26	S1T	6	22	26	28	6	8	14	—
S1T			8	22	26	28	6	8	14	—	
BSS1-27A		27	S1T	6	22	27	29	6	8	14	—
BSS1-28A		28	S1T	6	25	28	30	6	8	14	—
BSS1-29A		29	S1T	8	25	29	31	6	8	14	—
BSS1-30A BSS1-30B BSS1-30C BSS1-30D		30	S1T	5	25	30	32	6	8	14	—
S1T			6	25	30	32	6	8	14	—	
S1T			8	25	30	32	6	8	14	—	
S1K			10	25	30	32	6	8	14	4 x 1.8	
BSS1-32A BSS1-32B BSS1-32C BSS1-32D		32	S1T	5	28	32	34	6	8	14	—
S1T	6		28	32	34	6	8	14	—		
S1T	8		28	32	34	6	8	14	—		
S1K	10		28	32	34	6	8	14	4 x 1.8		
BSS1-34A	34	S1T	8	28	34	36	6	8	14	—	
BSS1-35A BSS1-35B	35	S1T	8	28	35	37	6	8	14	—	
S1K		10	28	35	37	6	8	14	4 x 1.8		
BSS1-36A BSS1-36B	36	S1T	8	28	36	38	6	8	14	—	
S1K		10	28	36	38	6	8	14	4 x 1.8		
BSS1-38A	38	S1T	8	28	38	40	6	8	14	—	
BSS1-40A BSS1-40B BSS1-40C	40	S1T	6	28	40	42	6	8	14	—	
S1T		8	28	40	42	6	8	14	—		
S1K		10	28	40	42	6	8	14	4 x 1.8		
BSS1-50A BSS1-50B BSS1-50C	50	S1T	6	28	50	52	6	8	14	—	
S1T		8	28	50	52	6	8	14	—		
S1K		10	28	50	52	6	8	14	4 x 1.8		

[Caution on Product Characteristics]

- ① Keyways are made according to JIS B1301 standards and Js9 tolerances. For products with a tapped hole, a set screw is included as an accessory.
- ② The allowable torques shown in the table are calculated values according to the assumed usage conditions. Please see Page 31 for more details.
- ③ The backlash values shown in the table are the theoretical values for the backlash in the normal direction of a pair of identical gears in mesh.
- ④ If diameter is less than φ 4, the diameter tolerance is H8. If diameter is φ 5 or φ 6, and the hole length exceeds 3 times of the diameter, the tolerance is also H8.