

# AL2SP

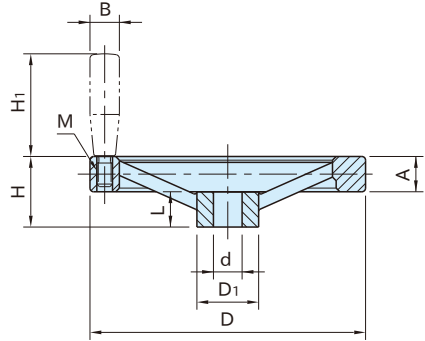
# ALUMINUM ANGLED-SPOKE HANDWHEELS



**AL2SP-N**  
(Without Handle-Mounting Tapped Hole)



**AL2SP**  
(With Handle-Mounting Tapped Hole)  
Note: Handle must be ordered separately



Handwheel
Aluminum alloy(AC4B)
Buffed finish

Without Handle-Mounting Tapped Hole	With Handle-Mounting Tapped Hole		D	H	A	D <sub>1</sub>	L	d (H8)	Weight (g)
Part Number	Part Number	M							
<b>AL2SP 80N</b>	<b>AL2SP 80</b>	M 6×1	80	28	14	24	16	10	160
<b>AL2SP100N</b>	<b>AL2SP100</b>		100	30		26	17		250
<b>AL2SP125N</b>	<b>AL2SP125</b>	M 8×1.25	125	33	15	31	18	12	380
<b>AL2SP160N</b>	<b>AL2SP160</b>	M10×1.5	160	39					
<b>AL2SP200N</b>	<b>AL2SP200</b>		200	45	42	24	18	1,020	
<b>AL2SP250N</b>	<b>AL2SP250</b>		250	50	23	48	28	22	1,700

With Handle-Mounting Tapped Hole Part Number	Recommended Revolving Handles	Recommended Revolving Handles	B	H <sub>1</sub>
	Part Number	Part Number		
<b>AL2SP 80</b> <b>AL2SP100</b>	RG 28	-	14	28
	RG 40	RG40N	18	40
	RG 50	RG50N	21	50
<b>AL2SP125</b>	RG 65	RG65N	23	65
	-	RG80NB	26	80
<b>AL2SP160</b>	RG 80	RG80N	26	80
<b>AL2SP200</b>	RG 90	RG90N	28	90
<b>AL2SP250</b>	RG115	-	29	116

## Notes

- Aluminum fixed handles and aluminum revolving handles can also be used.
- Slight dimensional variations can be caused due to buffed finish.