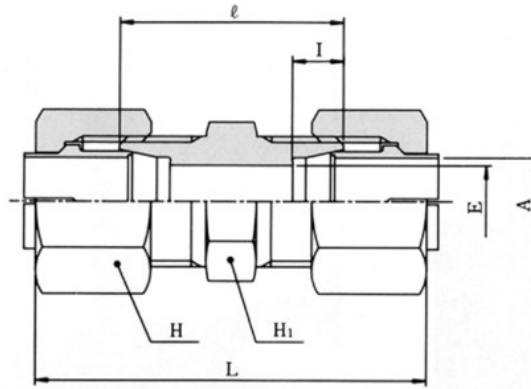


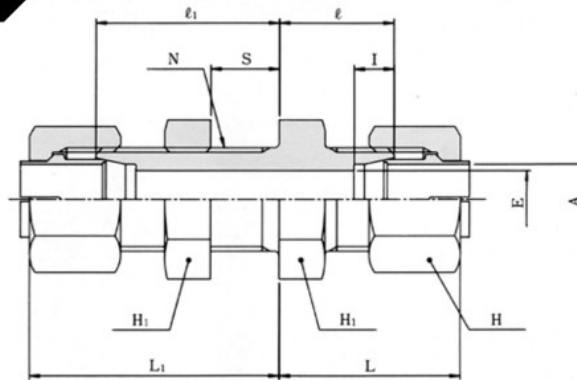
## Union KUA



unit: mm

Part No.	Tube OD A	E	Hex.		I	ℓ	Approx. L	Weight (kg)
			H <sub>1</sub>	H				
KUA06-000CE	6	4.5	10	12	5.5	20	38.6	0.020
KUA08-000CE	8	6	12	14	5.5	22	42	0.030
KUA10-000CE	10	8	14	17	5.5	23	43	0.040
KUA12-000CE	12	10	17	19	6	24	44	0.051
KUA16-000CE	16	13	22	27	8	29	54.2	0.130
KUA20-000CE	20	17	27	30	8	30	58.6	0.154
KUA25-000CE	25	22	32	36	9	33	62.6	0.225
KUA30-000CE	30	26	36	41	9	35	65.6	0.291

## Bulkhead Union KSU



unit: mm

Part No.	Tube OD A	E	Hex.		I	ℓ <sub>1</sub>	ℓ	Approx. L <sub>1</sub>	Approx. L	N	Max. S	Weight (kg)
			H <sub>1</sub>	H								
KSU06-000CE	6	4.5	14	12	5.5	26	13	35.3	22.3	M10×1	13	0.035
KSU08-000CE	8	6	17	14	5.5	27.5	14.5	37.5	24.5	M12×1	13	0.055
KSU10-000CE	10	8	19	17	5.5	29	16	39	26	M14×1	13	0.072
KSU12-000CE	12	10	22	19	6	29	16	39	26	M16×1	13	0.091
KSU16-000CE	16	13	27	27	8	34	19	46.6	31.6	M22×1.5	15	0.202
KSU20-000CE	20	17	32	30	8	36	21	50.3	35.3	M26×1.5	15	0.261
KSU25-000CE	25	22	36	36	9	37.5	22.5	52.3	37.3	M32×1.5	15	0.357
KSU30-000CE	30	26	41	41	9	39	23.5	54.3	38.8	M36×1.5	15	0.453

**⚠ CAUTION :** This type of fitting is designed to be used for wall penetration. When used in the place of strong vibration and/or pressure fluctuation, proper vibration measures such as fixing the piping by clamp are required.