

K-210 CIRCULAR SAW



100 V

- Disk cutter (K-210-2), with angle guide and parallel guide
- Power cable: 2m

Rotation speed	3500 to 6000 rpm
Standard disk cutter	K-210-2
Rated voltage / frequency	100 VAC 50 / 60 Hz
Power consumption	200 W
Rated time	15 minutes
External dimensions	300 (W) × 170 (H) × 260 (D) mm *
Weight	5.8 kg

* Max. width (500 mm) when work table is fully extended.

Cutting capacity

Sheet material type		Sheet thickness mm	Compatible disk cutters
PCB	Glass epoxy	3	K-210-3
	Ceramic	1	
Metal	Steel sheet (without heat treatment)	1	K-210-2 (standard)
	Aluminum sheet (pure aluminum)	5	
	Plastic	10	
	Wood	26	K-210-1

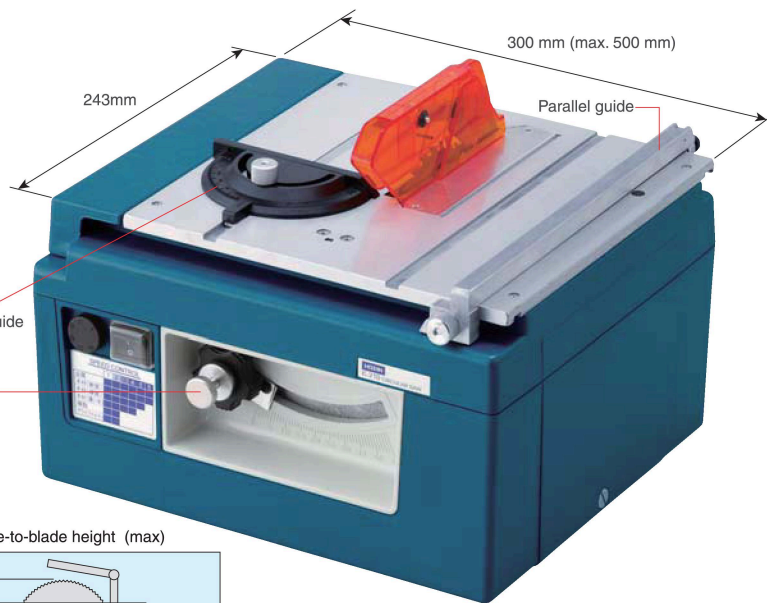
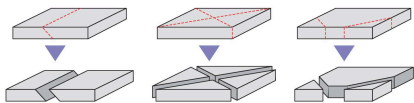


Max. table width of 500 mm when the table guide is extended



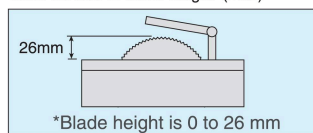
Example of angle guide

* Various types of cuts are possible by changing the guide setting.



Blade angle and height adjusting knob

Table surface-to-blade height (max)



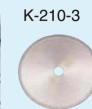
Note Continuous operation which exceeds 15 min. can cause a motor failure, etc. Even on & off at 1 to 2 minute intervals is considered continuous operation.

Replacement parts

DISK CUTTERS (K-210 dedicated blade)



Part no.	Types	Number of teeth	Outer dia. mmφ	Blade thickness mm	Application	Blade thickness
K-210-1	Saw	80 teeth	85	1.0	Wood	
K-210-2	Carbide	24 teeth		1.2	Metal & plastic	
K-210-3	Diamond (grid No.: #150)	—		0.8	PCB & metal	



K-110 CIRCULAR SAW



100 V 230 V
K-110-230

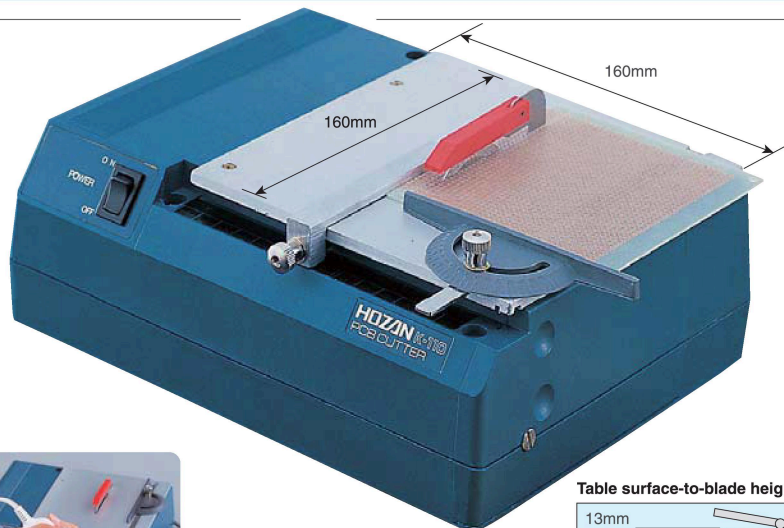
- Disk cutter (K-110-1), with an accessory angle guide and parallel guide
- Power cable: 2m

Rotation speed	3500rpm
Standard disk cutter	K-110-1
Rated voltage / frequency	100 VAC, 50 / 60 Hz (K-110) 230 VAC (K-110-230)
Power consumption	80 W
Rated time	15 minutes
External dimensions	245 (W) × 100 (H) × 185 (D) mm
Weight	1.7 kg

Cutting capacity

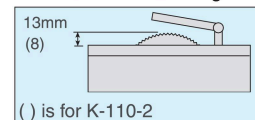
Sheet material type		Sheet thickness mm	Compatible disk cutters
PCB	Paper phenol	2	K-110-2
	Glass epoxy	3	
	Ceramic	1	
Metal	Steel sheet (without heat treatment)	1	K-110-1 (standard)
	Aluminum sheet (pure aluminum)	2	
	Plastic	2	
	Wood	2	K-110-2

Note Continuous operation which exceeds 15 min. can cause a motor failure, etc. Even on & off at 1 to 2 minute intervals is considered continuous operation.



Example of K-110 + H-17 (the rotation speed can be adjusted)

Table surface-to-blade height



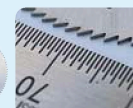
Replacement parts

DISK CUTTERS (K-110 replacement blade)



■ Diamond grain: #150 (K-110-1)

Part no.	Types	Number of teeth	Outer dia. mmφ	Blade thickness mm	Application
K-110-1	Diamond (grid No.: #150)	—	60	0.8	PCB & Metal
K-110-2	Saw	100 teeth	50	0.5	Metal & wood Plastic



K-110-18 BELT



■ For K-110

Blade thickness

