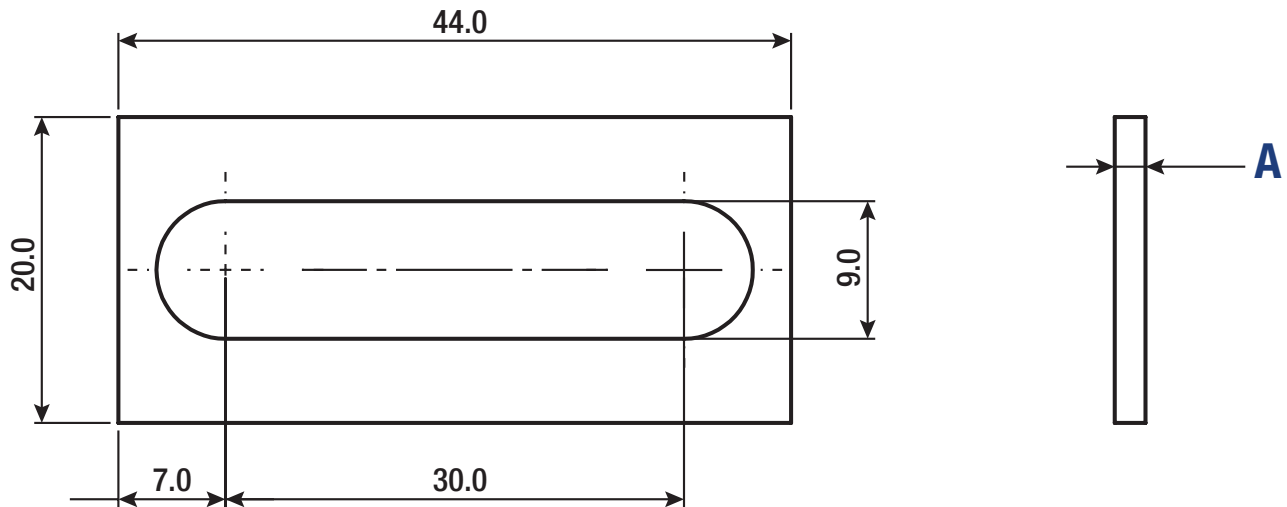


# Metric Fitting Spacers

20 MM SERIES FOR 3-HOLE COMPONENTS ASP4S SERIES SPACERS



3D CAD is available online.



Type	Material	Finish	Add. Notes
ASP4S	Cold Rolled Steel S.A.E. 1018 Precision Ground	Black Oxide	Holes are centered unless otherwise noted

NAAMS Code	A (mm) (±0.03)
ASP430S	3.00
ASP432S	3.20
ASP434S	3.40
ASP436S	3.60
ASP438S	3.80
ASP440S	4.00
ASP442S	4.20

NAAMS Code	A (mm) (±0.03)
ASP444S	4.40
ASP446S	4.60
ASP448S	4.80
ASP450S	5.00
ASP452S	5.20
ASP454S	5.40
ASP456S	5.60

NAAMS Code	A (mm) (±0.03)
ASP458S	5.80
ASP460S	6.00
ASP462S	6.20
ASP464S	6.40
ASP466S	6.60
ASP468S	6.80
ASP470S	7.00

Manufactured by Douglas Stamping Co.™

The Douglas Stamping Company™ logo is a trademark of Douglas Stamping Company.