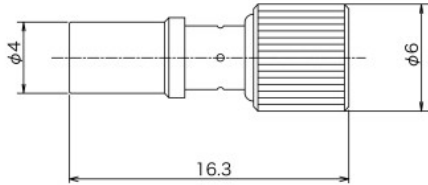
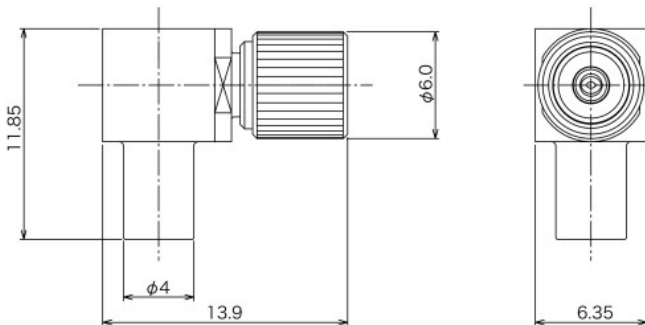


## ▶ Plug



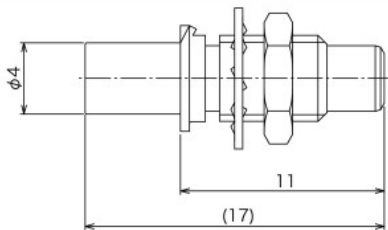
Part Number	Applicable Cable	Finish		Assembly Instruction	Crimp Tool
		Outer Conductor	Center Conductor		
27DS-P-1.5-CF	1.5D-QEV	Ni	Au	1	CR-H-1101
	1.5D-2V				
27DS-P-196U-CF	RG-196A/U	Ni	Au	1	CR-H-1101

## ▶ Right Angle Plug



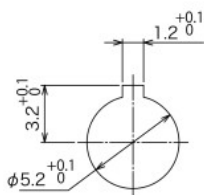
Part Number	Applicable Cable	Finish		Assembly Instruction	Crimp Tool
		Outer Conductor	Center Conductor		
27DS-LP-1.5-CF	1.5D-QEV	Ni	Au	2	CR-H-1101
	1.5D-2V				
27DS-LP-196U-CF	RG-196A/U	Ni	Au	2	CR-H-1101

## ▶ Bulkhead Jack



Part Number	Applicable Cable	Finish		Assembly Instruction	Crimp Tool
		Outer Conductor	Center Conductor		
27DS-BJ-1.5-CF	1.5D-QEV	Ni	Au	1	CR-H-1101
	1.5D-2V				

Panel Thickness : 3.0 Max.



Panel Mounting Hole

© Specifications and/or dimensions in this catalog are subject to change without notice.  
Your checking the latest specifications with our drawings would be highly appreciated.