

▶ BNC Style Receptacle

31-10-CF
31-10-CAu-CF

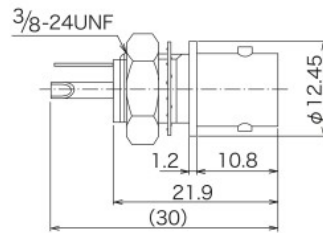
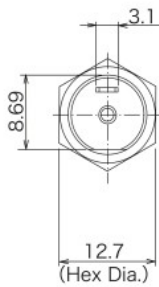
Round Pin Contact



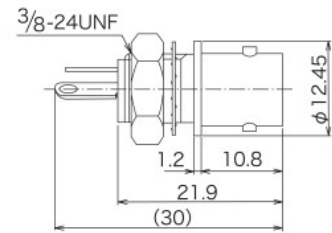
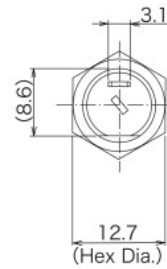
Part Number	Contact	Outer Conductor
31-10-CF	Ag Plating	Ni Plating
31-10-CAu-CF	Au Plating	Ni Plating

31-10T-D2Tuning fork Contact
(Low-cost Type : Press Contact)

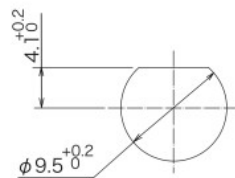
Part Number	Contact	Outer Conductor
31-10T-D2	Ag Plating	Ni Plating



Panel Thickness : 4.3mm max.



Panel Thickness : 4.3mm max.

Panel Mounting Dimensions

(Note) When mounting this connector as above, the stud pins are located up and below.
Recommend 115.6 to 135.2 N · cm for nut tightening torque.