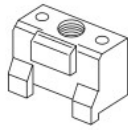
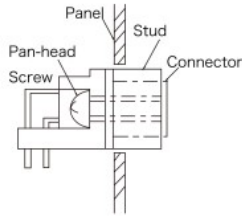


▶ Mounting on Panel and PCB

(□ : Thread Size)

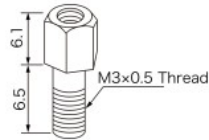
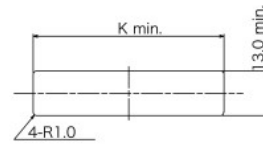


Stud (17L-002 □)

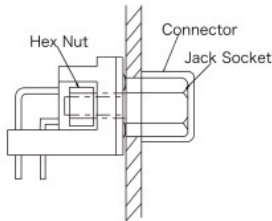


Type 1

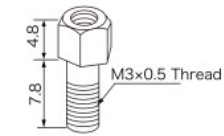
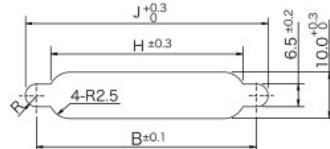
Panel Mounting Dimensions



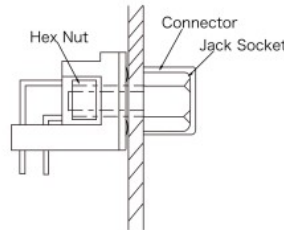
Jack Socket (17L-003 □ 1)



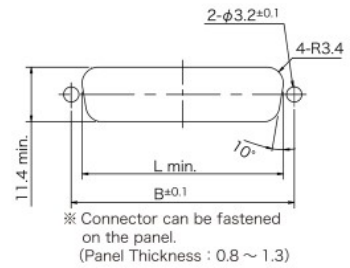
Type 2



Jack Socket (17L-003 □ 3)

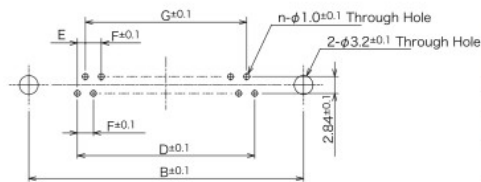
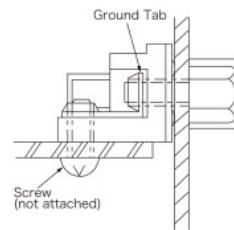
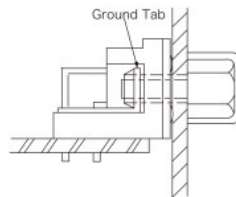
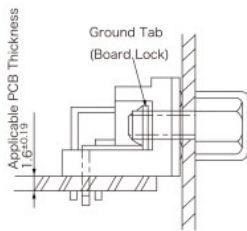


Type 3



□ : Thread Size
 A : M2.6×0.45
 B : M3×0.5
 C : #4-40UNC

Number of Contact	B	H	J	K	L
9	24.99	18.50	31.0	34.09	20.50
15	33.32	26.80	39.3	42.42	28.80
25	47.04	40.70	53.2	56.14	42.50
37	63.50	57.00	69.5	72.60	59.10



PCB Mounting Dimensions
 (Applicable PCB Thickness: t = 1.6 ± 0.19)
 (View from mounting pattern side)

Number of Contact	B	D	E	F	G
9	24.99	10.98	1.37	2.74	8.22
15	33.32	19.20	1.37	2.74	16.44
25	47.04	33.12	1.38	2.76	30.36
37	63.50	49.68	1.38	2.76	46.92

© Specifications and/or dimensions in this catalogue are subject to change without notice.
 Your catalogue checking the latest specifications with our drawings would be highly appreciated.